



# Title Plan - LT 506967

---

**Survey Number** LT 506967  
**Surveyor Reference** LH STG8B&C  
**Surveyor** Christopher David Hawes  
**Survey Firm** Davie Lovell-Smith Ltd  
**Surveyor Declaration**

---

## Survey Details

**Dataset Description** Lots 831-856, 864-866, 873, 884-886, 898-902, 904-911, 921-935, 992, 1005-1012, 1070 and 1071 being subdivision of Lot 891, 892 and 992 DP496148

**Status** Initiated

**Land District** Canterbury **Survey Class** Class A

**Submitted Date** **Survey Approval Date**  
**Deposit Date**

---

## Territorial Authorities

Christchurch City

---

## Comprised In

CT 729468  
CT 729467  
CT 729466

---

## Created Parcels

Parcels	Parcel Intent	Area	CT Reference
Lot 831 Deposited Plan 506967	Fee Simple Title	0.0651 Ha	769069
Lot 832 Deposited Plan 506967	Fee Simple Title	0.0632 Ha	769070
Lot 833 Deposited Plan 506967	Fee Simple Title	0.0709 Ha	769071
Lot 834 Deposited Plan 506967	Fee Simple Title	0.0720 Ha	769072
Lot 835 Deposited Plan 506967	Fee Simple Title	0.0606 Ha	769073
Lot 836 Deposited Plan 506967	Fee Simple Title	0.0611 Ha	769074
Lot 837 Deposited Plan 506967	Fee Simple Title	0.0609 Ha	769075
Lot 838 Deposited Plan 506967	Fee Simple Title	0.0636 Ha	769076
Lot 839 Deposited Plan 506967	Fee Simple Title	0.0556 Ha	769077
Lot 840 Deposited Plan 506967	Fee Simple Title	0.0556 Ha	769078
Lot 841 Deposited Plan 506967	Fee Simple Title	0.0518 Ha	769079
Lot 842 Deposited Plan 506967	Fee Simple Title	0.0502 Ha	769080
Lot 843 Deposited Plan 506967	Fee Simple Title	0.0532 Ha	769081
Lot 844 Deposited Plan 506967	Fee Simple Title	0.0409 Ha	769082
Lot 845 Deposited Plan 506967	Fee Simple Title	0.0371 Ha	769083
Lot 846 Deposited Plan 506967	Fee Simple Title	0.0509 Ha	769084
Lot 847 Deposited Plan 506967	Fee Simple Title	0.0379 Ha	769085
Lot 848 Deposited Plan 506967	Fee Simple Title	0.0554 Ha	769086
Lot 849 Deposited Plan 506967	Fee Simple Title	0.0374 Ha	769087
Lot 850 Deposited Plan 506967	Fee Simple Title	0.0410 Ha	769088
Lot 851 Deposited Plan 506967	Fee Simple Title	0.0449 Ha	769089



# Title Plan - LT 506967

---

## Created Parcels

Parcels	Parcel Intent	Area	CT Reference
Lot 852 Deposited Plan 506967	Fee Simple Title	0.0383 Ha	769090
Lot 853 Deposited Plan 506967	Fee Simple Title	0.0373 Ha	769091
Lot 854 Deposited Plan 506967	Fee Simple Title	0.0387 Ha	769092
Lot 855 Deposited Plan 506967	Fee Simple Title	0.0417 Ha	769093
Lot 856 Deposited Plan 506967	Fee Simple Title	0.0497 Ha	769094
Lot 864 Deposited Plan 506967	Fee Simple Title	0.0514 Ha	769095
Lot 865 Deposited Plan 506967	Fee Simple Title	0.0515 Ha	769096
Lot 866 Deposited Plan 506967	Fee Simple Title	0.0427 Ha	769097
Lot 873 Deposited Plan 506967	Fee Simple Title	0.0718 Ha	769098
Lot 884 Deposited Plan 506967	Fee Simple Title	0.0793 Ha	769099
Lot 885 Deposited Plan 506967	Fee Simple Title	0.0600 Ha	769100
Lot 886 Deposited Plan 506967	Fee Simple Title	0.0604 Ha	769101
Lot 898 Deposited Plan 506967	Fee Simple Title	0.0722 Ha	769102
Lot 899 Deposited Plan 506967	Fee Simple Title	0.0700 Ha	769103
Lot 900 Deposited Plan 506967	Fee Simple Title	0.0703 Ha	769104
Lot 901 Deposited Plan 506967	Fee Simple Title	0.0850 Ha	769105
Lot 902 Deposited Plan 506967	Fee Simple Title	0.1398 Ha	769106
Lot 904 Deposited Plan 506967	Fee Simple Title	0.0600 Ha	769107
Lot 905 Deposited Plan 506967	Fee Simple Title	0.0604 Ha	769108
Lot 906 Deposited Plan 506967	Fee Simple Title	0.0632 Ha	769109
Lot 907 Deposited Plan 506967	Fee Simple Title	0.0552 Ha	769110
Lot 908 Deposited Plan 506967	Fee Simple Title	0.0566 Ha	769111
Lot 909 Deposited Plan 506967	Fee Simple Title	0.0553 Ha	769112
Lot 910 Deposited Plan 506967	Fee Simple Title	0.0569 Ha	769113
Lot 911 Deposited Plan 506967	Fee Simple Title	0.0602 Ha	769114
Lot 921 Deposited Plan 506967	Fee Simple Title	0.1189 Ha	769115
Lot 922 Deposited Plan 506967	Fee Simple Title	0.1189 Ha	769116
Lot 923 Deposited Plan 506967	Fee Simple Title	0.1189 Ha	769117
Lot 924 Deposited Plan 506967	Fee Simple Title	0.1189 Ha	769118
Lot 925 Deposited Plan 506967	Fee Simple Title	0.1189 Ha	769119
Lot 926 Deposited Plan 506967	Fee Simple Title	0.1189 Ha	769120
Lot 927 Deposited Plan 506967	Fee Simple Title	0.1189 Ha	769121
Lot 928 Deposited Plan 506967	Fee Simple Title	0.1189 Ha	769122
Lot 929 Deposited Plan 506967	Fee Simple Title	0.1288 Ha	769123
Lot 930 Deposited Plan 506967	Fee Simple Title	0.5021 Ha	769124
Lot 931 Deposited Plan 506967	Fee Simple Title	0.1389 Ha	769125
Lot 932 Deposited Plan 506967	Fee Simple Title	0.0721 Ha	769126
Lot 933 Deposited Plan 506967	Fee Simple Title	0.0557 Ha	769127
Lot 934 Deposited Plan 506967	Fee Simple Title	0.0560 Ha	769128
Lot 935 Deposited Plan 506967	Fee Simple Title	0.0551 Ha	769129
Lot 992 Deposited Plan 506967	Vesting on Deposit for Recreation Reserve (Territorial Authority)	7.1350 Ha	769130



# Title Plan - LT 506967

---

## Created Parcels

Parcels	Parcel Intent	Area	CT Reference
Lot 1005 Deposited Plan 506967	Vesting on Deposit for Road	0.4752 Ha	
Lot 1006 Deposited Plan 506967	Vesting on Deposit for Road	0.4581 Ha	
Lot 1007 Deposited Plan 506967	Vesting on Deposit for Road	0.0888 Ha	
Lot 1008 Deposited Plan 506967	Vesting on Deposit for Road	0.0374 Ha	
Lot 1009 Deposited Plan 506967	Fee Simple Title	0.0005 Ha	769131
Lot 1010 Deposited Plan 506967	Fee Simple Title	0.0047 Ha	769132
Lot 1011 Deposited Plan 506967	Fee Simple Title	0.0001 Ha	769133
Lot 1012 Deposited Plan 506967	Fee Simple Title	0.0010 Ha	769134
Lot 1070 Deposited Plan 506967	Fee Simple Title	1.0258 Ha	769135
Lot 1071 Deposited Plan 506967	Vesting on Deposit for Local Purpose Reserve	0.1846 Ha	777661
Area A Deposited Plan 506967	Easement		
Area B Deposited Plan 506967	Easement		
Area C Deposited Plan 506967	Easement		
Area D Deposited Plan 506967	Easement		
Area E Deposited Plan 506967	Easement		
Area F Deposited Plan 506967	Easement		
Area G Deposited Plan 506967	Easement		
Area H Deposited Plan 506967	Easement		
Area I Deposited Plan 506967	Easement		
Area J Deposited Plan 506967	Easement		
Area K Deposited Plan 506967	Easement		
Area L Deposited Plan 506967	Easement		
Area M Deposited Plan 506967	Easement		
Area N Deposited Plan 506967	Easement		
Area O Deposited Plan 506967	Easement		
Area P Deposited Plan 506967	Easement		
Area AA Deposited Plan 506967	Land Covenant		
Area AB Deposited Plan 506967	Land Covenant		
Area AC Deposited Plan 506967	Land Covenant		
Area AD Deposited Plan 506967	Land Covenant		
Area AE Deposited Plan 506967	Land Covenant		
Area AF Deposited Plan 506967	Land Covenant		
Area AG Deposited Plan 506967	Land Covenant		
Area AH Deposited Plan 506967	Land Covenant		
Area AI Deposited Plan 506967	Land Covenant		
Area AJ Deposited Plan 506967	Land Covenant		
Area AK Deposited Plan 506967	Land Covenant		
Area AL Deposited Plan 506967	Land Covenant		
Area AM Deposited Plan 506967	Land Covenant		

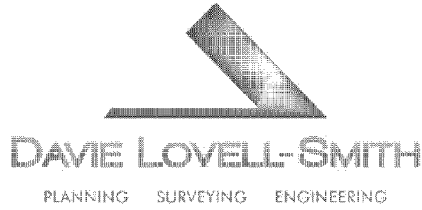


# Title Plan - LT 506967

---

## Created Parcels

Parcels	Parcel Intent	Area	CT Reference
Area AN Deposited Plan 506967	Land Covenant		
Area AO Deposited Plan 506967	Land Covenant		
Area AP Deposited Plan 506967	Land Covenant		
Area AQ Deposited Plan 506967	Land Covenant		
Area AR Deposited Plan 506967	Land Covenant		
Area AS Deposited Plan 506967	Land Covenant		
Area AT Deposited Plan 506967	Land Covenant		
<b>Total Area</b>		14.0283 Ha	



Davie, Lovell-Smith Ltd  
 116 Wrights Road,  
 PO Box 679,  
 Christchurch 8140,  
 New Zealand  
 Telephone (03) 379-0793,  
 E-mail: office@dls.co.nz

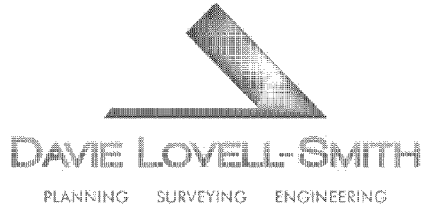
Our Ref: E18447

D.P.506967

MEMORANDUM OF EASEMENTS

Purpose	Servient Tenement	Shown	Dominant Tenement
Right of way, rights to drain water & sewage and rights to convey water, gas, electricity telecommunications & computer media.	Lot 846 Lot 848 Lot 901 Lot 902 Lot 931 Lot 932 Lot 866 Lot 856	B C D, E F, G H I J K	Lot 848 Lot 846 Lot 902 Lot 901 Lot 932 Lot 931 Lot 856 Lot 866
Right to convey electricity telecommunications & computer media.	Lot 901 Lot 902 Lot 838	D F L	Lot 921 Lot 921 Lot 837
Right to convey telecommunications & computer media in gross.	Lot 1070 Lot 846 Lot 848 Lot 901 Lot 902 Lot 931 Lot 932 Lot 866 Lot 856 Lot 1011	A B C D, E F, G H I J K Lot 1011	<u>Grantee</u>  Enable Networks Ltd
Right to convey electricity in gross .	Lot 931 Lot 932 Lot 1070 Lot 1011	H I A Lot 1011	Orion New Zealand Ltd
Right of way on foot in gross .	Lot 931 Lot 932 Lot 1011	H I Lot 1011	Christchurch City Council

# Schedule / Memorandum



Davie, Lovell-Smith Ltd  
116 Wrights Road,  
PO Box 679,  
Christchurch 8140,  
New Zealand  
Telephone (03) 379-0793,  
E-mail: office@dls.co.nz

Our Ref: E18447

D.P.506967

## SCHEDULE OF EXISTING EASEMENTS IN GROSS

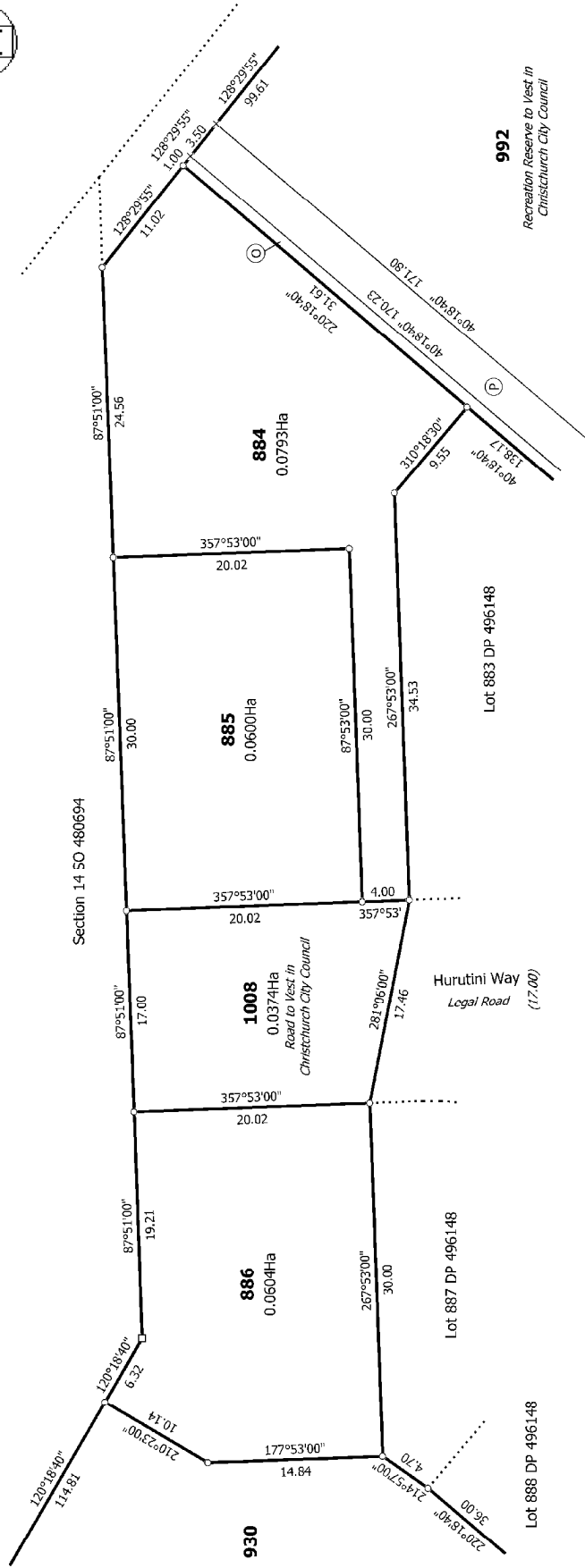
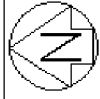
Purpose	Servient Tenement	Shown	Document
Right to convey electricity in gross .	Lot 992	O	EI 10362110.10
Right to convey water in gross.	Lot 992	O, P	EI 10362110.9
Right to convey water in gross.	Lot 1071 Lot 1070	N M	T 989430.1

## CONSENT NOTICES

Areas AA, AB, AC, AD, AE, AF, AG, AH, AI, AJ, AK, AL, AM, AN,  
AO, AP, AQ, AR, AS & AT are subject to consent notices.



**Diag. A1**



T 2/11

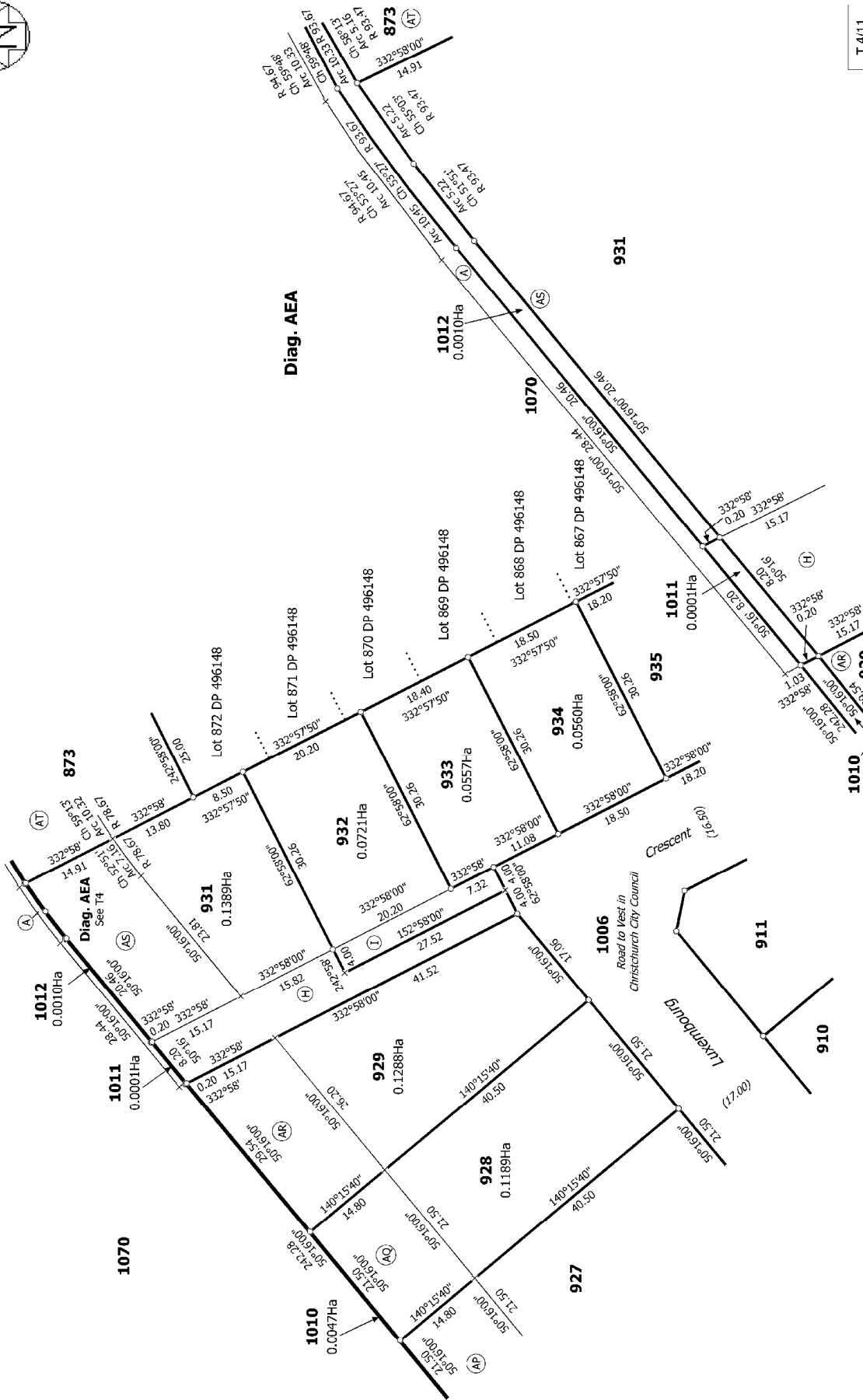
<p>Land District: Canterbury</p> <p><b>Digitally Generated Plan</b></p> <p>Generated on: 28/03/2017 08:16am Page 6 of 17</p>	<p>Lots 831-856, 864-866, 873, 884-886, 898-902, 904-911, 921-935, 992, 1005-1012, 1070 and 1071 being subdivision of Lot 891, 892 and 992 DP496148</p>	<p>Surveyor: Christopher David Hawes Firm: Dawie Lovell-Smith Ltd</p>	<p>Title Plan LT 506967 DRAFT</p>
--	---	---	---







Diag. AE



T 4/11

<p>Land District: Canterbury</p> <p>Digitally Generated Plan</p> <p>Generated on: 29/03/2017 08:16am Page: 10 of 17</p>	<p>Surveyor: Christopher David Hawes</p> <p>Firm: Dawie Lovell-Smith Ltd</p>	<p>Diag. AEA</p> <p>Diag. AEA See T4</p>	<p>Diag. AEA</p> <p>Diag. AEA See T4</p>	<p>Title Plan</p> <p>LT 506967</p> <p>DRAFT</p>
---	--	--	--	---

Lots 831-856, 864-866, 873, 884-886, 898-902, 904-911, 921-935, 992, 1005-1012, 1070 and 1071 being subdivision of Lot 891, 892 and 992 DP496148



Diag. AG



T 5/11

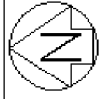
Land District: Canterbury  
 Digitally Generated Plan  
 Generated on: 28/03/2017 08:16am Page: 11 of 17

Lots 831-856, 864-866, 873, 884-886, 898-902, 904-911, 921-935, 992, 1005-1012, 1070 and 1071 being subdivision of Lot 891, 892 and 992 DP496148

Surveyor: Christopher David Hawes  
 Firm: Dawie Lovell-Smith Ltd

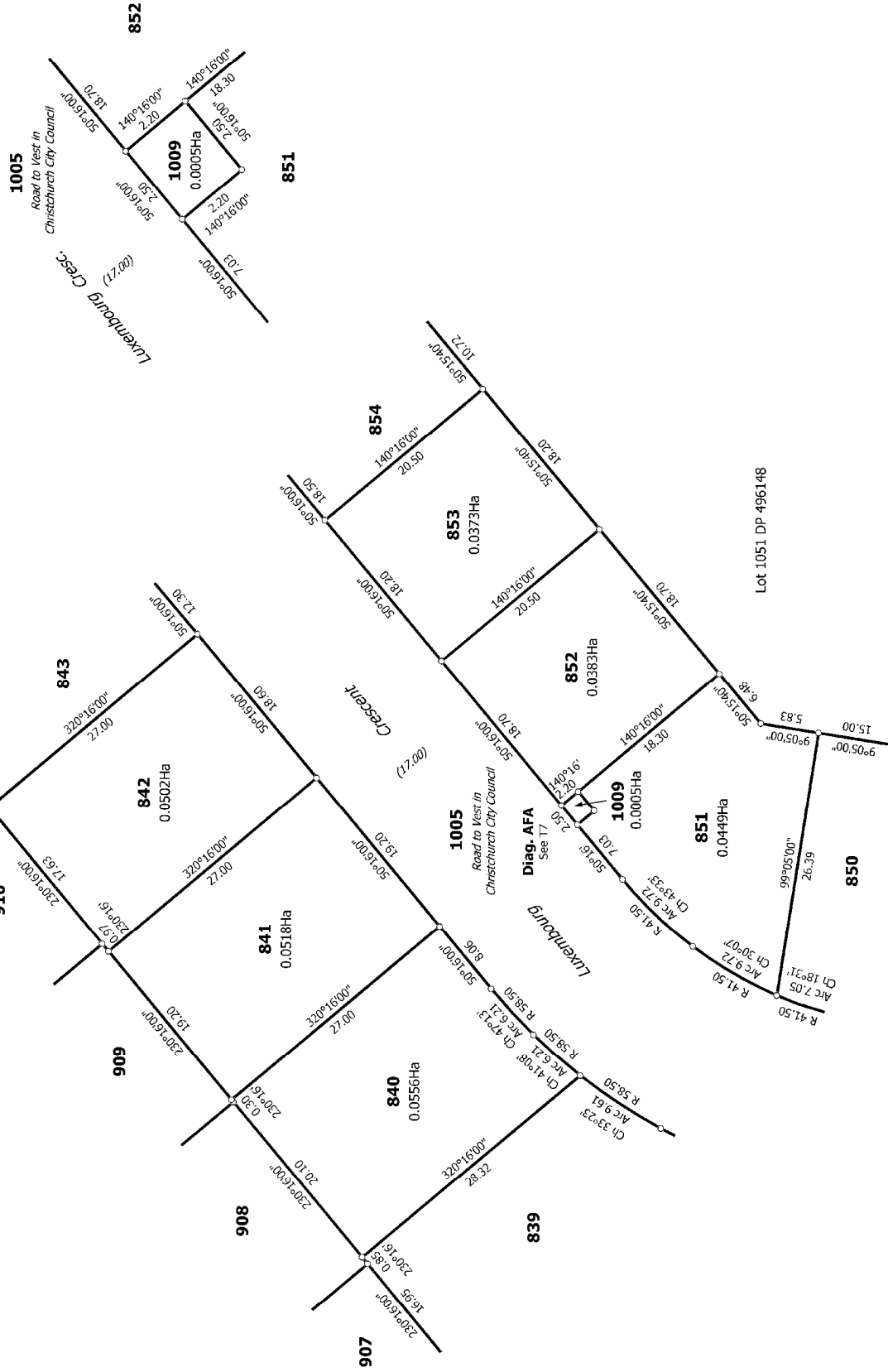
Title Plan  
 LT 506967  
 DRAFT





Diag. AF

Diag. AFA



T 7/11

Land District: Canterbury

Digitally Generated Plan

Generated on: 20/03/2017 08:16am Page: 13 of 17

Lots 831-856, 864-866, 873, 884-886, 898-902, 904-911, 921-935, 992, 1005-1012, 1070 and 1071 being subdivision of Lot 891, 892 and 992 DP496148

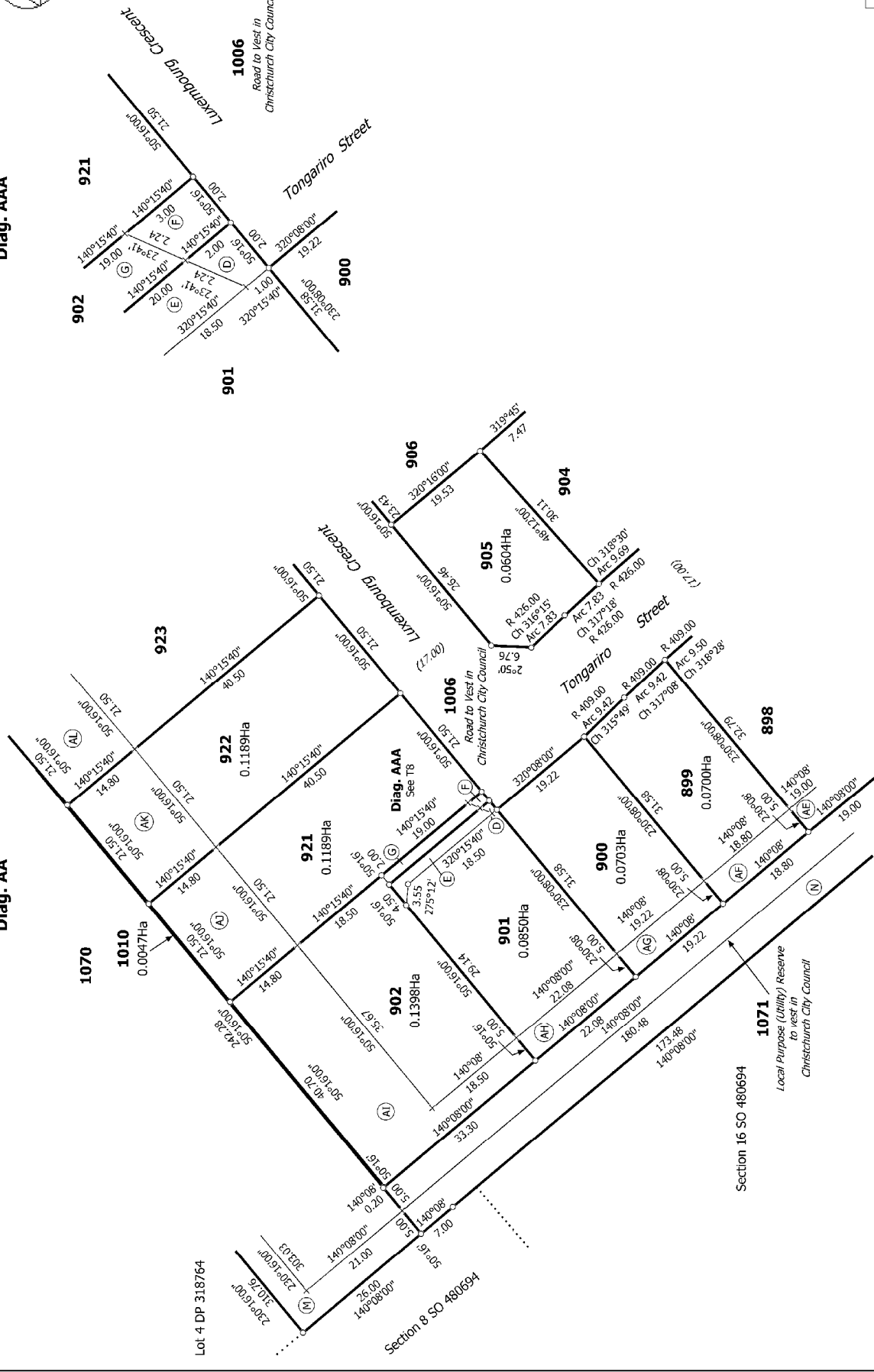
Surveyor: Christopher David Hawes  
Firm: Dawie Lovell-Smith Ltd

Title Plan  
LT 506967  
DRAFT



Diag. AA

Diag. AAA



T 8/11

Land District: Canterbury  
 Digitally Generated Plan  
 Generated on: 25/03/2017 08:16am Page: 1 of 17

Lots 831-856, 864-866, 873, 884-886, 898-902, 904-911, 921-935, 992, 1005-1012, 1070 and 1071 being subdivision of Lot 891, 892 and 992 DP496148

Surveyor: Christopher David Hawes  
 Firm: Dawie Lovell-Smith Ltd

Title Plan  
 LT 506967  
 DRAFT







